

LIFETRACK® Digestive Twin-Pack



LIFETRACK® DIGESTIVE TWIN-PACK

Enzyme Support

Part of the Lifetrack® Digestive Twin-Pack

- Enzyme blend supporting complete digestion
- Specific Enzyme to break down gluten
- Contains Aloe Vera to aid in regularity

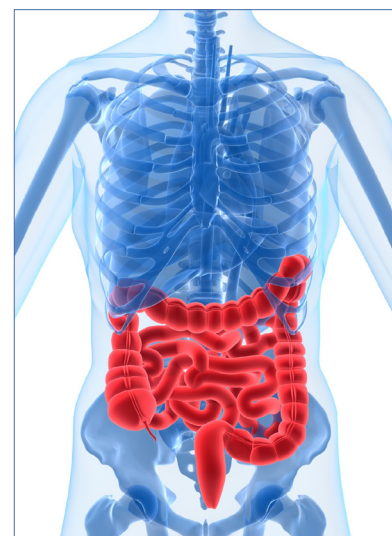
Probiotic Support™

Part of the Lifetrack® Digestive Twin-Pack

- Increased number of live bacteria
- Six Unique Probiotic Strains
- Prebiotic that promotes growth of good bacteria

Be Your Own Health Advocate

At Conklin, we believe that you know best when it comes to taking care of yourself, and how important it is to gather information on your quest for good health. We encourage you to further your research by searching for these key words: Probiotics, Prebiotics, Enzymes, Aloe vera.



• These Statements have not been evaluated by the Food and Drug Administration. This product is not intended to diagnose, treat, cure, or prevent any disease.

CONKLIN®

LIFETRACK[®] Digestive Twin-Pack



For Your Information

Usage

Essential Nutrition	Adult Health Maintenance	Adult Health Challenges	Children (ages 0-3)	Children (ages 4-9)	Children (ages 10-17)
Probiotic Support [™]	2 capsules daily with food	4-6 capsules daily with food	N/A	1 capsule daily with food	2 capsules daily with food
Enzyme Support	2 capsules daily with food	2-4 capsules daily With food	N/A	1 capsule daily with food	1 -2 capsules daily with food

As a Dietary Supplement: Take one to two capsules per day with a meal or food.

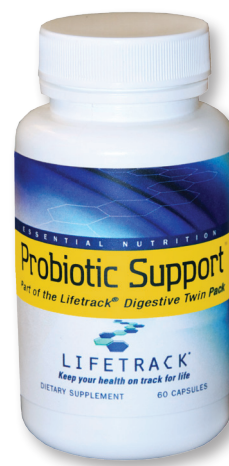
Supplement Facts

Probiotic Support[™]

2 Capsules Contain:	% Daily Value
Probiotic Blend 116 mg <i>Lactobacillus acidophilus</i> , <i>Lactobacillus plantarum</i> , <i>Lactobacillus rhamnosus</i> , <i>Bifidobacterium bifidum</i> , <i>Bifidobacterium longum</i> , <i>Bifidobacterium infantis</i>	**
Inulin 200 mg	**

** Daily Value not established.

Other Ingredients: Microcrystalline cellulose, gelatin and water



Enzyme Support

2 Capsules Contain:	% Daily Value
Aloe Vera (Whole leaf) 200 mg	**
Enzyme Blend 116 mg <i>Amylase (6000 DU)</i> , <i>Cellulase (1500 CU)</i> , <i>Lactase (1000 ALU)</i> , <i>Lipase (1126 FIP)</i> , <i>Bromelain (76800 FCCPU)</i>	**
BioCore [®] DPP IV 100 mg	
<i>Protease 500 DPP-IV</i>	**
<i>Protease 30000 HUT</i>	**
<i>Protease 8.6 AP</i>	**

** Daily Value not established.

Other Ingredients: Rice bran, gelatin and water

